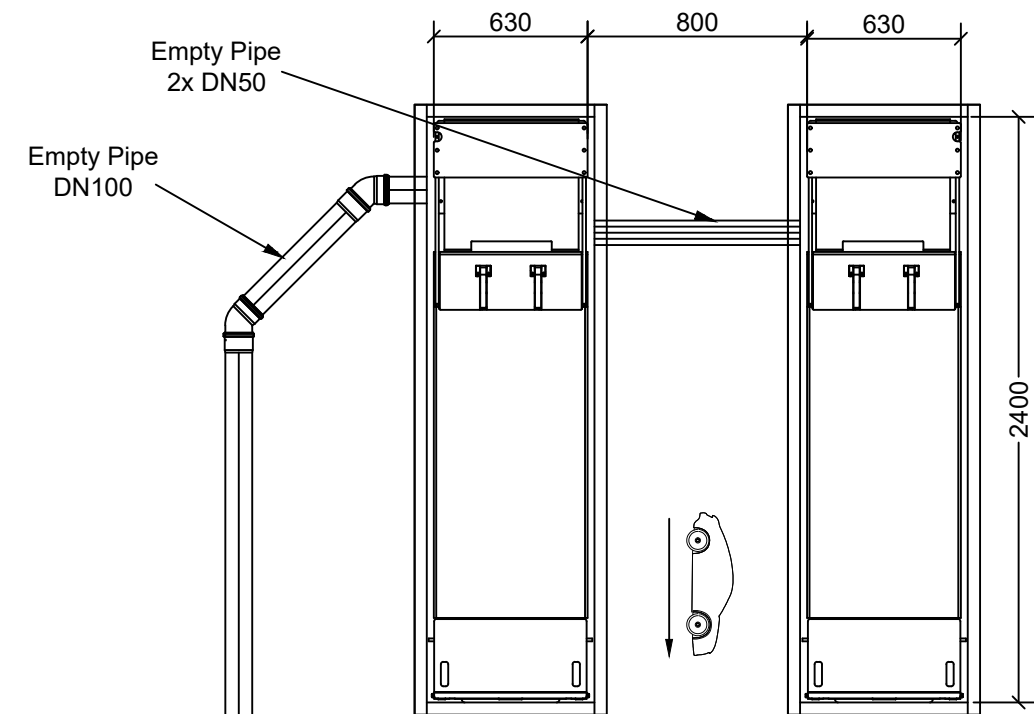


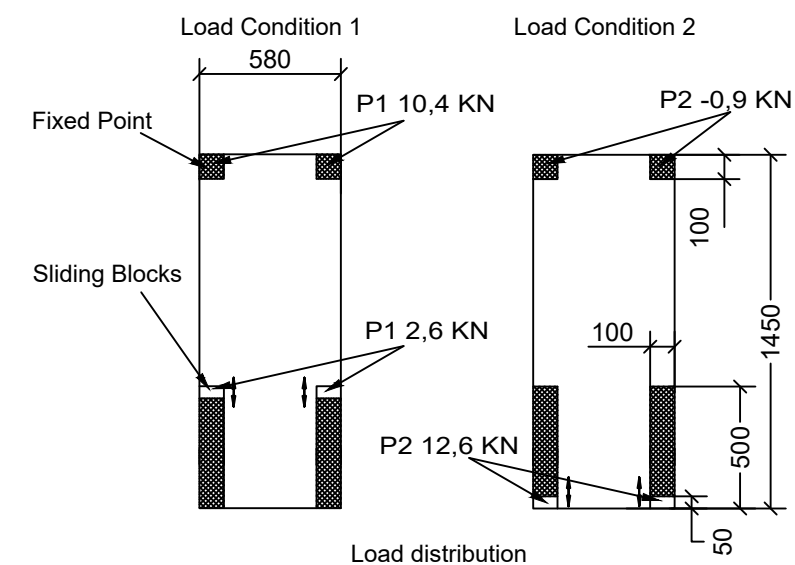
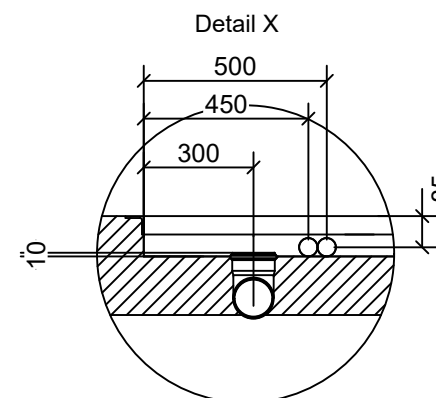
The position of the operating unit can be adapted.
For VOLVO, this control unit should be installed in the void behind the VPS wall.

360x340x1100

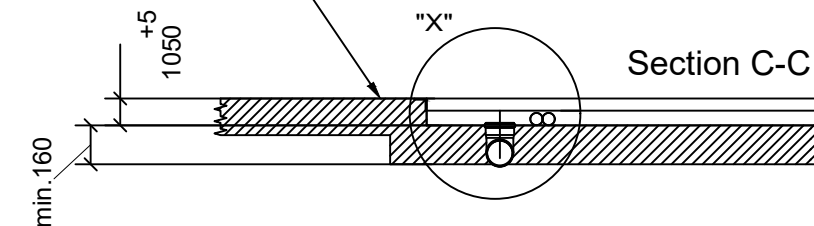


Max. weight acting on the base frame
Own weight ca. 700Kg

Prepared by customer at the main operating unit:
Power supply:
3PH, 400V, 50Hz/60HZ Cable: 3L+PE/ 4*1.5²/ length 3m/ 16A
3PH, 230V, 50Hz/60HZ Cable: 3L+PE/ 4*1.5²/ length 3m/ 25A
1PH, 230V, 50Hz /60HZ Cable: L+N+PE/ 3*2.5²/ length 3m/ 32A
Motor power 3 kW



FFL
Without floor pavement / tiles



All dimensions in millimeters

